

ENROLL NOW!

FEES

Registration: \$25
Weekly Tuition \$55*
1st week tuition and registration are non-refundable.

Multi-child Discount
\$5 off for each additional child's weekly tuition.

DSS Vouchers accepted

Tuition is due on the Friday before the next week of attendance.

You may register during regular business hours, Monday-Friday from 9-5pm. Applications are available at the Solomon's World office, the Welcome Center as well as on-line at www.mtzbc.com.

Bridgette Cannon | Director
336.373.4251
cannonb@mtzbc.com

SCHOOLS



ALLEN MIDDLE
AYCOCK MIDDLE
ALAMANCE
ARCHER
BLUFORD
BROOKS
CONE
FAULKNER
FOUST
FRAZIER
GENERAL GREENE
GILLESPIE
HAMPTON
JONES
LINCOLN ACADEMY
MENDENHALL MIDDLE
MURPHEY
PEELER
SOUTHEAST MIDDLE
VANDALIA
AND MORE

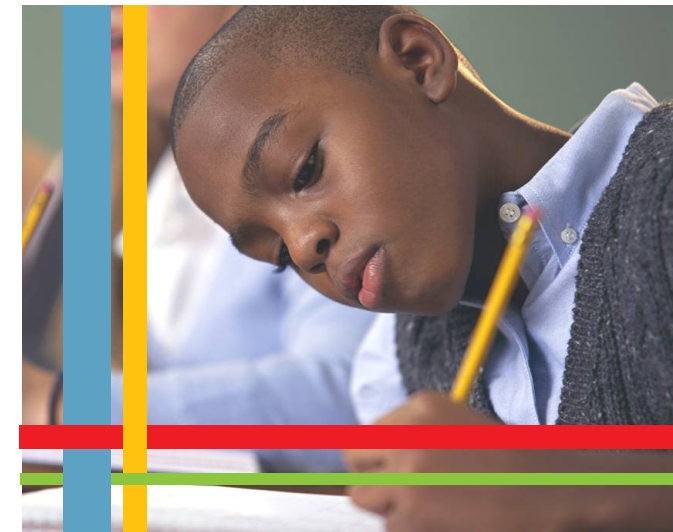


MOUNT ZION BAPTIST CHURCH
OF GREENSBORO, INC



AFTER-SCHOOL PROGRAM
2011-2012

Expectation of
EXCELLENCE



One In Christ

**Mount Zion Baptist Church
of Greensboro, Inc.**

1301 Alamance Church Road
Greensboro, NC 27406
336.273.7930



Our Mission

The Mission of Solomon's World After School Program at Mount Zion Baptist Church of Greensboro, Inc. is to provide a well balanced program based on the Word of God, His standards and ideals.

Solomon's World provides a safe place for your child to go after school, as well as providing opportunities for education and enrichment.

We are committed to instilling positive attitudes and providing knowledge and skills necessary for their intellectual, emotional, spiritual and physical development.

Students will receive enrichment activities, computer time, recreation and special programs. Homework help will be provided as well as a healthy snack.

Solomon's World is determined to create an academically challenging environment that encourages students to be their very best, to be respectful of others and to be responsible member of the community.



Activities

- Theme/Focus Months
- Daily Devotional
- Career Exploration
- Technology Training
- Arts and Crafts
- Field Trips
- "The Other Channel" Reading Program
- Christian Education
- Heritage
- Leadership
- Drug Prevention
- Character Education
- Recreational Games
- Peer Mentoring

Daily Schedule

2:00—2:50	Arrival
2:50—3:30	Snack/Break <i>(Provided)</i>
3:30—3:45	Daily Devotion
3:45—4:45	Academics Tutorial Reading
4:45—5:30	Academics/ Group Dynamics
5:30—6:00	Clean-up Board Games

* Schedule is subject to change.

